



PROVVISORIA

SLT958

Anti-condensation

Motor:

Flat motor on board Brushless

Lighting:

Dimmable and dynamic Led (2700 to 6500K)

Control panel:

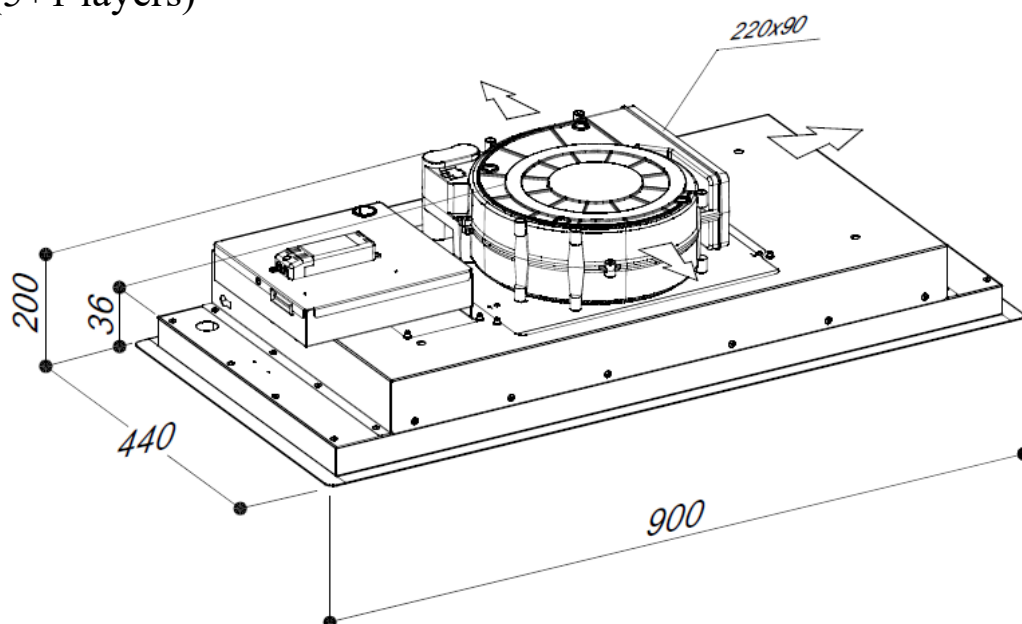
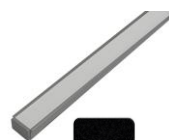
Remote control

Filter:

Anodized aluminum (5+1 layers)

Finishing:

black matt painted



Installation:

For the installation, create a false ceiling with a niche of 865mm for 405mm whose minimum height to be reached is 210mm

Technologies

The SLT958 anti-condensation is equipped with the following technologies



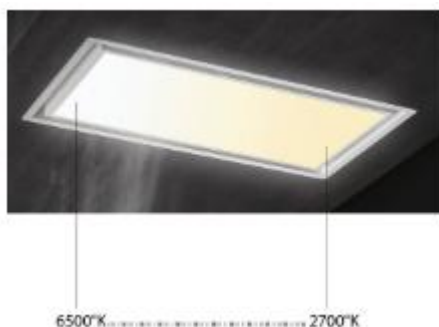
ANTI-DROP SYSTEM

This is an innovative anti-condensation system, based on thermal resistances inside the glass panels or the stainless steel panels.

By heating the surface in contact with the vapours coming from the induction hob, this system does not allow condensation or water drops to develop and fall on the hob.

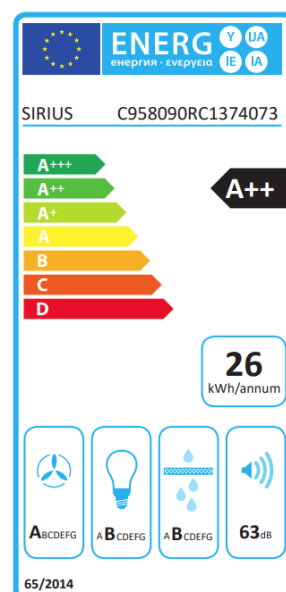


LIGHTING



The latest generation LEDs in our range hoods allow to manage light intensity by increasing or decreasing its power and choose colour temperature from warm to cold light (from 2700°K to 6500°K), thus adapting hood lighting to the light of your domestic environment.

The lighting surface in our lighting system is perfectly homogeneous since there are no overshadows.



Sirius